

NOTES:

Redrock Huntington Beach 550
Huntington Beach, CA

REVISIONS:	--/--/--
--/--/--	--/--/--
--/--/--	--/--/--
--/--/--	--/--/--

JOB NUMBER:
_

INSTALL DATE:
--/--/--

DRAWING DESCRIPTION:
Lighting - Flown

FILE NAME:
Redrock Huntington Beach 550 01.19.23.vwx

CREATED:
1/17/22

LAST REVISION:
--/--/--

SCALE:
N.T.S.

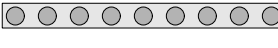

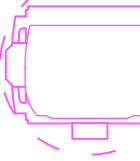
STAMP:
"FITTED" .PDF'S & FAXES
ARE NOT TO THIS SCALE
(PLEASE USE GRAPHIC
SCALE)

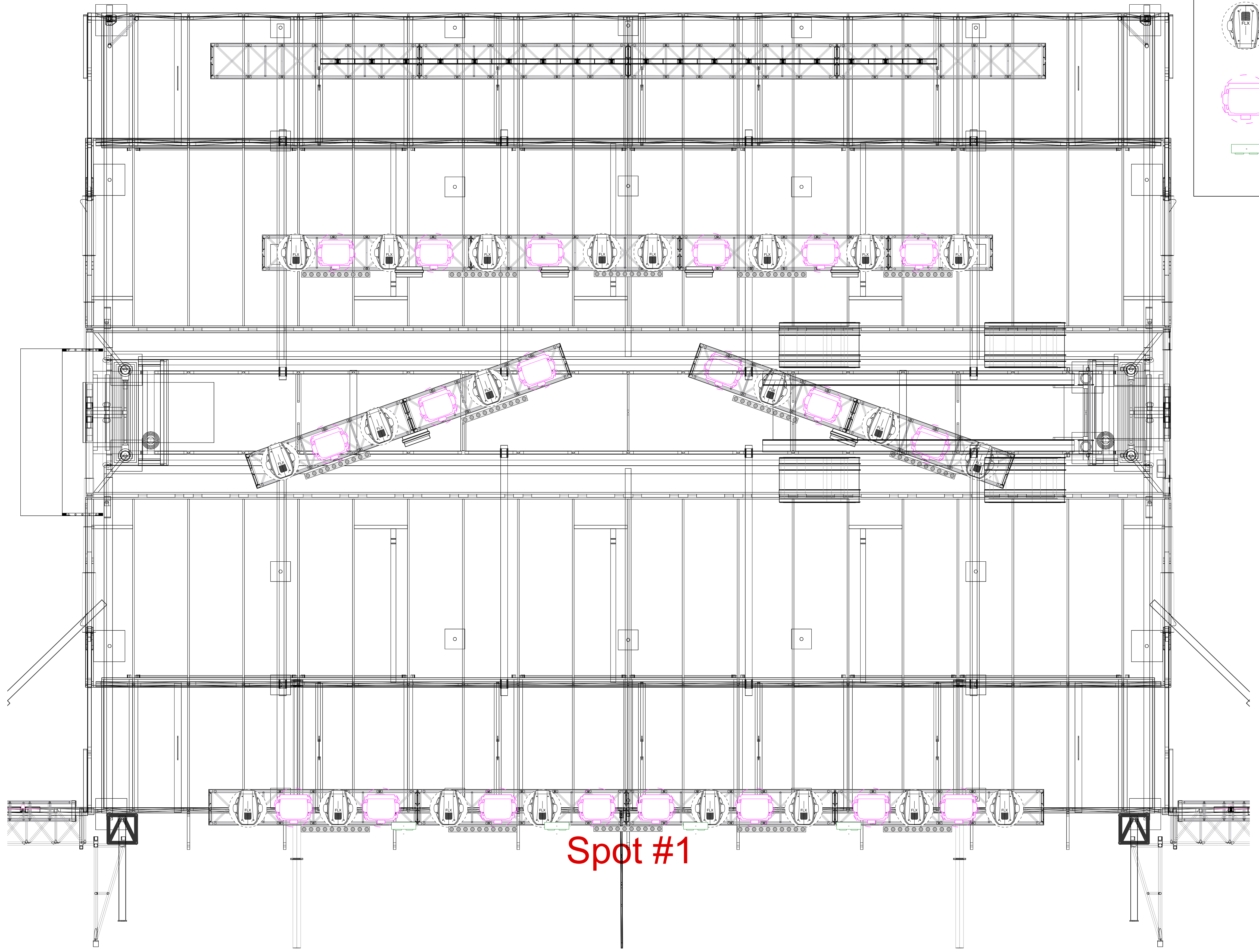
SHEET: Sht-5
OF
12

SHEET SIZE:
US Arch D

CREATED BY:
Hannah Buckhoff

Lighting Key

-  Lumina Strip (14)
-  Protron 3k Color (6)
-  Platinum FLX (22)
-  Elation Platinum 1200 Wash (20)
-  4 Light Blinder (4)



Spot #1

THIS DRAWING, ITS INHERENT CONCEPTS, AND ALL COPYRIGHT CONTAINED HEREIN ARE THE SOLE PROPERTY OF STAGE-TECH. THEREFORE, NEITHER IT, NOR ANY PORTION THEREOF, MAY BE DISCLOSED OR REPRODUCED IN ANY MANNER WITHOUT THE EXPRESSED CONSENT OF SAID OWNER. POSSESSION OF THIS DRAWING DOES NOT CONSTITUTE OWNERSHIP. UNAUTHORIZED REPRODUCTION OF THIS DRAWING IS A VIOLATION OF COPYRIGHT LAW.

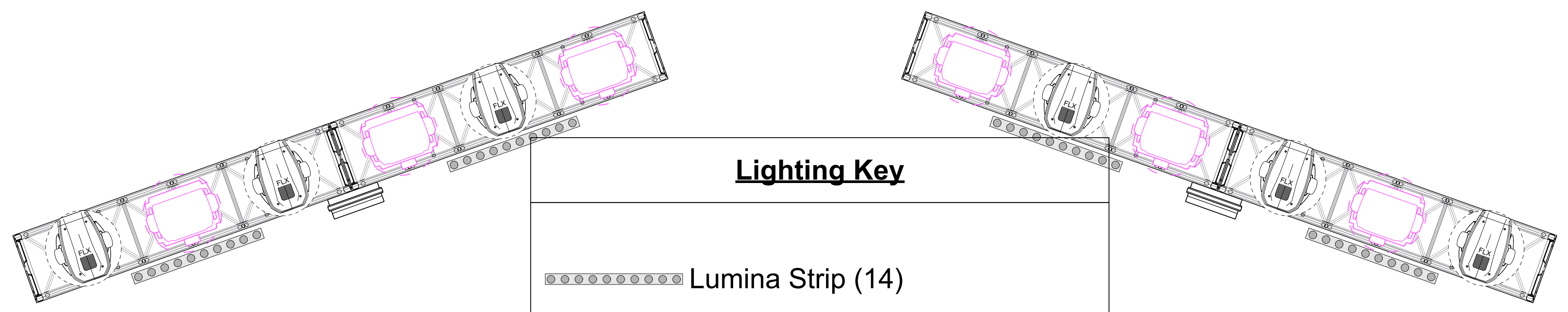
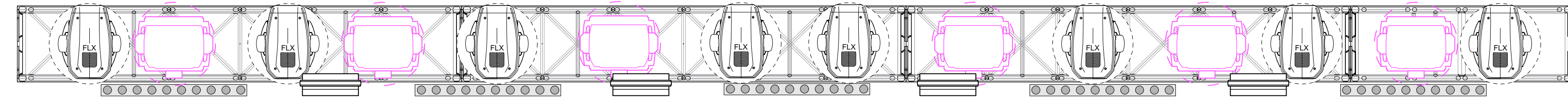
THESE CONCEPTS ARE INTENDED FOR THIS PRODUCTION ONLY AND MAY NOT BE SOLD, TRANSFERRED, GIVEN TO A THIRD PARTY, OR USED FOR ANY OTHER PRODUCTION.

THIS ILLUSTRATION REPRESENTS VISUAL CONCEPTS ONLY AND IS NOT MEANT TO IMPLY OR CERTIFY STRUCTURAL SUITABILITY, SOUNDNESS, FITNESS, OR SAFETY. ITS CREATOR TAKES NO RESPONSIBILITY FOR ITS PROPER EXECUTION.

ANY INCLUDED WEIGHTS AND/OR RIGGING ELEMENTS ARE OFFERED AS ESTIMATES ONLY, ARE EXPRESSLY NOT CERTIFIED BY STAGE-TECH, AND SHOULD BE REFERRED TO APPROPRIATE PROFESSIONALS FOR EVALUATION.

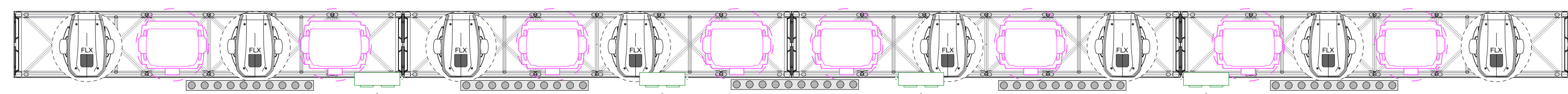
NOTES:

Redrock Huntington Beach 550
Huntington Beach, CA



Lighting Key

-  Lumina Strip (14)
-  Protron 3k Color (6)
-  Platinum FLX (22)
-  Elation Platinum 1200 Wash (20)
-  4 Light Blinder (4)



Spot #1

THIS DRAWING, ITS INHERENT CONCEPTS, AND ALL COPYRIGHT CONTAINED HEREIN ARE THE SOLE PROPERTY OF STAGE-TECH. THEREFORE, NEITHER IT, NOR ANY PORTION THEREOF, MAY BE DISCLOSED OR REPRODUCED IN ANY MANNER WITHOUT THE EXPRESSED CONSENT OF SAID OWNER. POSSESSION OF THIS DRAWING DOES NOT CONSTITUTE OWNERSHIP. UNAUTHORIZED REPRODUCTION OF THIS DRAWING IS A VIOLATION OF COPYRIGHT LAW.

THESE CONCEPTS ARE INTENDED FOR THIS PRODUCTION ONLY AND MAY NOT BE SOLD, TRANSFERRED, GIVEN TO A THIRD PARTY, OR USED FOR ANY OTHER PRODUCTION.

THIS ILLUSTRATION REPRESENTS VISUAL CONCEPTS ONLY AND IS NOT MEANT TO IMPLY OR CERTIFY STRUCTURAL SUITABILITY, SOUNDNESS, FITNESS, OR SAFETY. ITS CREATOR TAKES NO RESPONSIBILITY FOR ITS PROPER EXECUTION.

ANY INCLUDED WEIGHTS AND/OR RIGGING ELEMENTS ARE OFFERED AS ESTIMATES ONLY, ARE EXPRESSLY NOT CERTIFIED BY STAGE-TECH, AND SHOULD BE REFERRED TO APPROPRIATE PROFESSIONALS FOR EVALUATION.

REVISIONS:	--/--/--
--/--/--	--/--/--
--/--/--	--/--/--
--/--/--	--/--/--

JOB NUMBER:
_*

INSTALL DATE:
--/--/--

DRAWING DESCRIPTION:
Lighting - Flown Detail

FILE NAME:
Redrock Huntington Beach 550 01.19.23.vwx

CREATED:
1/17/22

LAST REVISION:
--/--/--

SCALE: N.T.S.	STAMP:
"FITTED" .PDF'S & FAXES ARE NOT TO THIS SCALE (PLEASE USE GRAPHIC SCALE)	
SHEET: Sht-6 OF 12	

SHEET SIZE:
US Arch D

CREATED BY:
Hannah Buckhoff

NOTES:

Redrock Huntington Beach 550
Huntington Beach, CA

REVISIONS:

--/--/--	--/--/--
--/--/--	--/--/--
--/--/--	--/--/--

JOB NUMBER: **_***

INSTALL DATE: --/--/--

DRAWING DESCRIPTION:
Rigging Plot

FILE NAME:
Redrock Huntington Beach 550 01.19.23.vwx

CREATED:
1/17/22

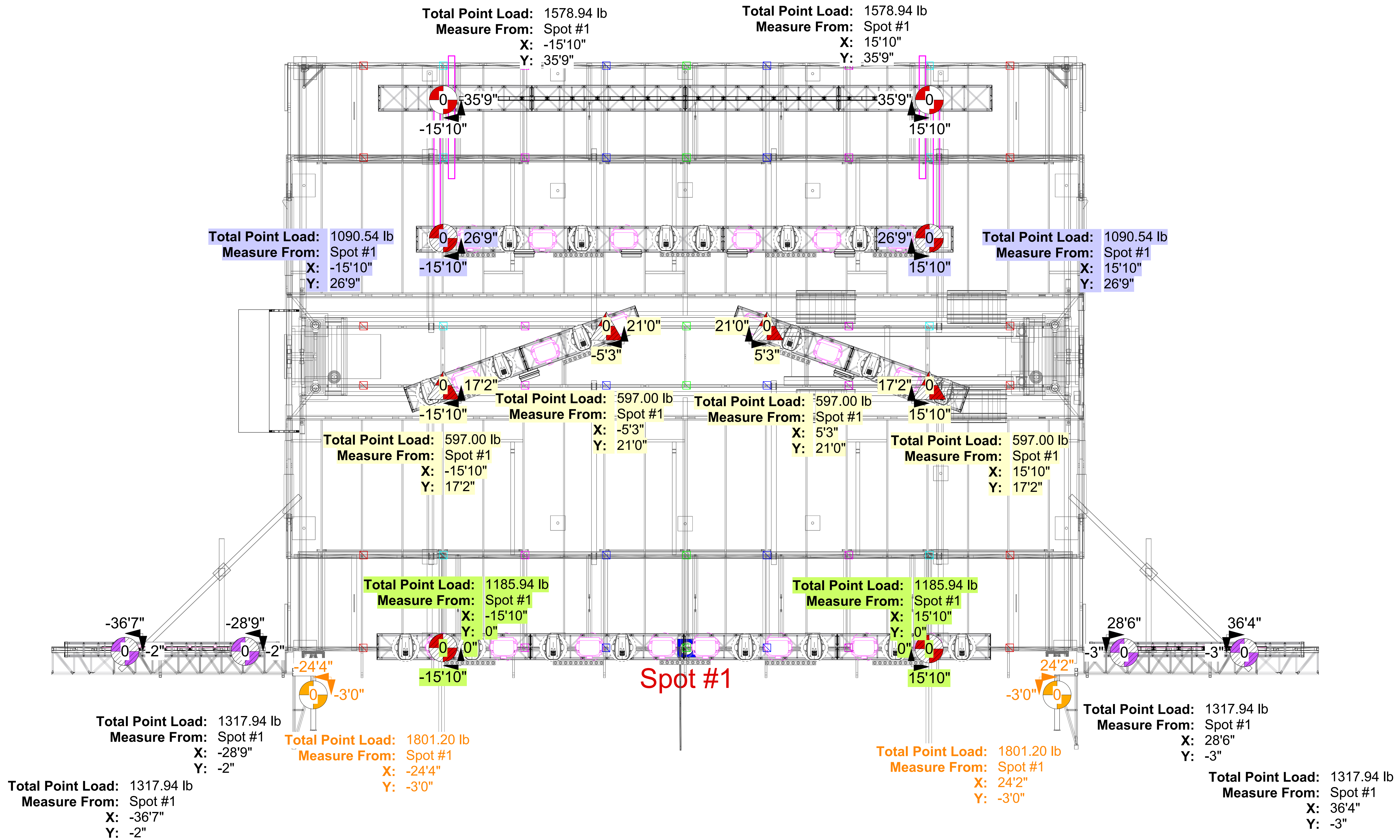
LAST REVISION:
--/--/--

SCALE: N.T.S.
"FITTED" .PDF'S & FAXES ARE NOT TO THIS SCALE (PLEASE USE GRAPHIC SCALE)

SHEET: Sht-7 OF 12

SHEET SIZE: US Arch D

CREATED BY: Hannah Buckhoff



THIS DRAWING, ITS INHERENT CONCEPTS, AND ALL COPYRIGHT CONTAINED HEREIN ARE THE SOLE PROPERTY OF STAGE-TECH. THEREFORE, NEITHER IT, NOR ANY PORTION THEREOF, MAY BE DISCLOSED OR REPRODUCED IN ANY MANNER WITHOUT THE EXPRESSED CONSENT OF SAID OWNER. POSSESSION OF THIS DRAWING DOES NOT CONSTITUTE OWNERSHIP. UNAUTHORIZED REPRODUCTION OF THIS DRAWING IS A VIOLATION OF COPYRIGHT LAW.

THESE CONCEPTS ARE INTENDED FOR THIS PRODUCTION ONLY AND MAY NOT BE SOLD, TRANSFERRED, GIVEN TO A THIRD PARTY, OR USED FOR ANY OTHER PRODUCTION.

THIS ILLUSTRATION REPRESENTS VISUAL CONCEPTS ONLY AND IS NOT MEANT TO IMPLY OR CERTIFY STRUCTURAL SUITABILITY, SOUNDNESS, FITNESS, OR SAFETY. ITS CREATOR TAKES NO RESPONSIBILITY FOR ITS PROPER EXECUTION.

ANY INCLUDED WEIGHTS AND/OR RIGGING ELEMENTS ARE OFFERED AS ESTIMATES ONLY, ARE EXPRESSLY NOT CERTIFIED BY STAGE-TECH, AND SHOULD BE REFERRED TO APPROPRIATE PROFESSIONALS FOR EVALUATION.

NOTES:

Redrock Huntington Beach 550
Huntington Beach, CA

REVISIONS:	--/--/--
--/--/--	--/--/--
--/--/--	--/--/--
--/--/--	--/--/--

JOB NUMBER: **_***

INSTALL DATE: --/--/--

DRAWING DESCRIPTION:
Rigging Points

FILE NAME:
Redrock Huntington Beach 550 01.19.23.vwx

CREATED:
1/19/2023

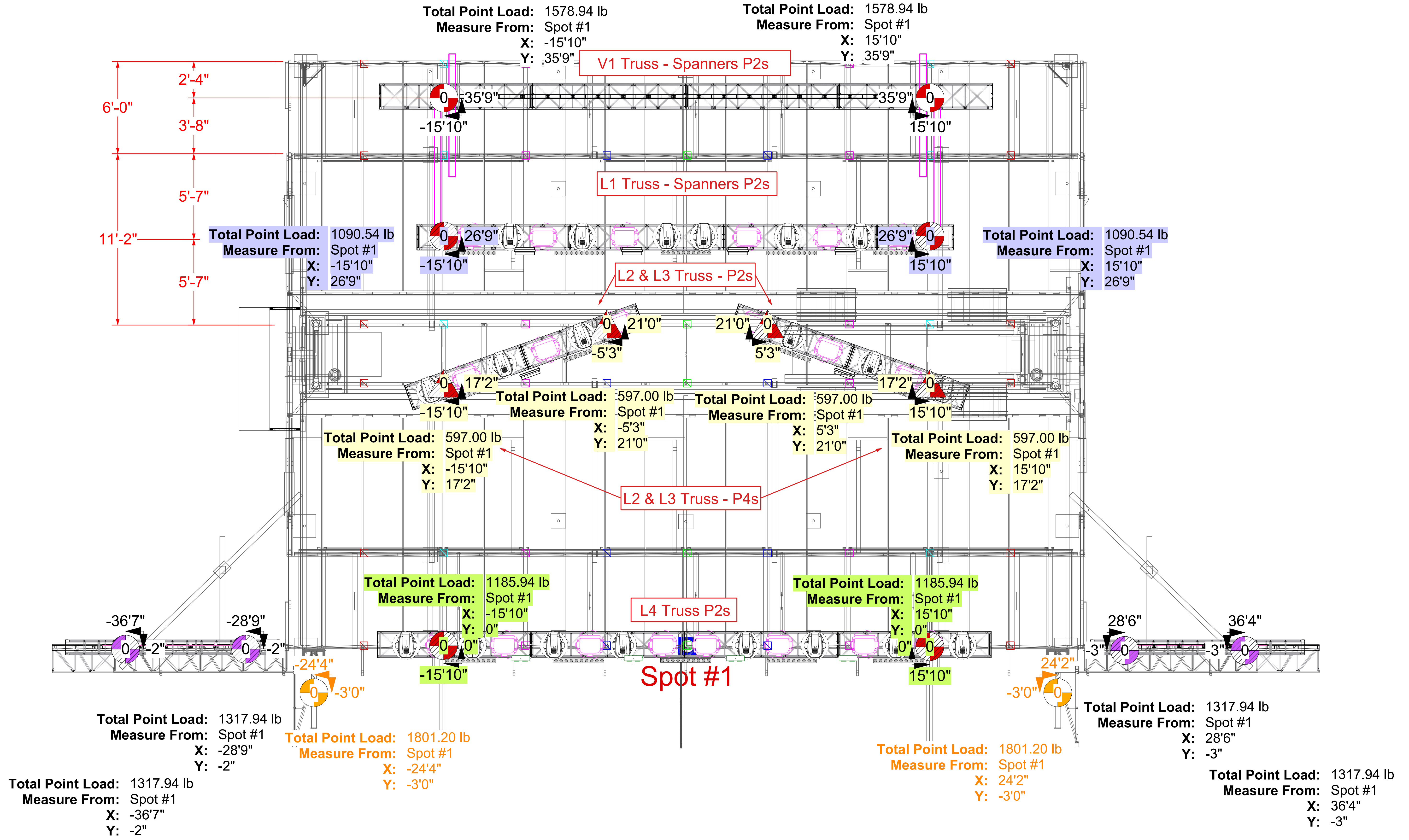
LAST REVISION:
--/--/--

SCALE: N.T.S.
"FITTED" .PDF'S & FAXES ARE NOT TO THIS SCALE (PLEASE USE GRAPHIC SCALE)

SHEET: Sht-7.1
OF 12

SHEET SIZE:
US Arch D

CREATED BY:
Hannah Buckhoff



THIS DRAWING, ITS INHERENT CONCEPTS, AND ALL COPYRIGHT CONTAINED HEREIN ARE THE SOLE PROPERTY OF STAGE-TECH. THEREFORE, NEITHER IT, NOR ANY PORTION THEREOF, MAY BE DISCLOSED OR REPRODUCED IN ANY MANNER WITHOUT THE EXPRESSED CONSENT OF SAID OWNER. POSSESSION OF THIS DRAWING DOES NOT CONSTITUTE OWNERSHIP. UNAUTHORIZED REPRODUCTION OF THIS DRAWING IS A VIOLATION OF COPYRIGHT LAW.

THESE CONCEPTS ARE INTENDED FOR THIS PRODUCTION ONLY AND MAY NOT BE SOLD, TRANSFERRED, GIVEN TO A THIRD PARTY, OR USED FOR ANY OTHER PRODUCTION.

THIS ILLUSTRATION REPRESENTS VISUAL CONCEPTS ONLY AND IS NOT MEANT TO IMPLY OR CERTIFY STRUCTURAL SUITABILITY, SOUNDNESS, FITNESS, OR SAFETY. ITS CREATOR TAKES NO RESPONSIBILITY FOR ITS PROPER EXECUTION.

ANY INCLUDED WEIGHTS AND/OR RIGGING ELEMENTS ARE OFFERED AS ESTIMATES ONLY, ARE EXPRESSLY NOT CERTIFIED BY STAGE-TECH, AND SHOULD BE REFERRED TO APPROPRIATE PROFESSIONALS FOR EVALUATION.

V1 Truss					
Equipment	Qty.		Weight (lbs)		Total (qty. x wt.)
20.5" Truss 10'	4	x	90	=	360
Bumper Bars	18	x	12	=	216
500x1000mm Infiled Panels	72	x	28	=	2016
Cable	1	x	200	=	200
1 Ton Motor w/60' Chain	2	x	182.94	=	365.88
2 Point EDL					1/2 Total Load for 2 Rigging Points
					3157.88
1578.94					
L1 Truss					
Equipment	Qty.		Weight (lbs)		Total (qty. x wt.)
20.5" Truss 10'	3	x	90	=	270
20.5" Truss 5'	1	x	56	=	56
Elation Platinum FLX	8	x	75	=	600
Elation 1200 Wash	6	x	87	=	522
Lumina Strip	5	x	14	=	70
Elation Protron 3K Color	4	x	24.3	=	97.2
Cable	1	x	200	=	200
1 Ton Motor w/60' Chain	2	x	182.94	=	365.88
2 Point EDL					1/2 Total Load for 2 Rigging Points
					2181.08
1090.54					
L2 & L3 Angled Truss					
Equipment	Qty.		Weight (lbs)		Total (qty. x wt.)
20.5" Truss 8'	2	x	51	=	102
Elation Platinum FLX	3	x	75	=	225
Elation 1200 Wash	3	x	87	=	261
Lumina Strip	2	x	14	=	28
Elation Protron 3K Color	1	x	24.3	=	24.3
Cable	1	x	200	=	200
1/2 Ton Motor w/60' Chain	2	x	176.93	=	353.86
2 Point EDL					1/2 Total Load for 2 Rigging Points
					1194.16
597.08					
L4 Truss					
Equipment	Qty.		Weight (lbs)		Total (qty. x wt.)
20.5" Truss 10'	4	x	90	=	360
Platinum FLX	8	x	75	=	600
Elation 1200 Wash	8	x	87	=	696
Lumina Strip	5	x	14	=	70
4 Light Blinders	4	x	20	=	80
Cable	1	x	200	=	200
1 Ton Motor w/60' Chain	2	x	182.94	=	365.88
2 Point EDL					1/2 Total Load for 2 Rigging Points
					2371.88
1185.94					
Video Wings Truss					
Equipment	Qty.		Weight (lbs)		Total (qty. x wt.)
12" Truss 14'	1	x	90	=	90
Bumper Bars	11	x	12	=	132
500x1000 Panels	66	x	28	=	1848
Cable	1	x	200	=	200
1 Ton Motor w/60' Chain	2	x	182.94	=	365.88
Total Weight					1/2 Total Load for 2 Rigging Points
					2635.88
1317.94					



voice: 562.407.1133
 fax: 562.407.1306
 e-mail: hannahb@stage-tech.com
 web: www.stage-tech.com

NOTES:

Redrock Huntington Beach 550
Huntington Beach, CA

REVISIONS:	--/--/--
--/--/--	--/--/--
--/--/--	--/--/--
--/--/--	--/--/--

JOB NUMBER:
_*

INSTALL DATE:
--/--/--

DRAWING DESCRIPTION:
Rigging Math

FILE NAME:
Redrock Huntington Beach 550 01.19.23.vwx

CREATED:
1/17/22

LAST REVISION:
--/--/--

SCALE: N.T.S.	STAMP:
"FITTED" .PDF'S & FAXES ARE NOT TO THIS SCALE (PLEASE USE GRAPHIC SCALE)	
SHEET: Sht-8 OF 12	
SHEET SIZE: US Arch D	
CREATED BY: Hannah Buckhoff	

THIS DRAWING, ITS INHERENT CONCEPTS, AND ALL COPYRIGHT CONTAINED HEREIN ARE THE SOLE PROPERTY OF STAGE-TECH. THEREFORE, NEITHER IT, NOR ANY PORTION THEREOF, MAY BE DISCLOSED OR REPRODUCED IN ANY MANNER WITHOUT THE EXPRESSED CONSENT OF SAID OWNER. POSSESSION OF THIS DRAWING DOES NOT CONSTITUTE OWNERSHIP. UNAUTHORIZED REPRODUCTION OF THIS DRAWING IS A VIOLATION OF COPYRIGHT LAW.

THESE CONCEPTS ARE INTENDED FOR THIS PRODUCTION ONLY AND MAY NOT BE SOLD, TRANSFERRED, GIVEN TO A THIRD PARTY, OR USED FOR ANY OTHER PRODUCTION.

THIS ILLUSTRATION REPRESENTS VISUAL CONCEPTS ONLY AND IS NOT MEANT TO IMPLY OR CERTIFY STRUCTURAL SUITABILITY, SOUNDNESS, FITNESS, OR SAFETY. ITS CREATOR TAKES NO RESPONSIBILITY FOR ITS PROPER EXECUTION.

ANY INCLUDED WEIGHTS AND/OR RIGGING ELEMENTS ARE OFFERED AS ESTIMATES ONLY, ARE EXPRESSLY NOT CERTIFIED BY STAGE-TECH, AND SHOULD BE REFERRED TO APPROPRIATE PROFESSIONALS FOR EVALUATION.

NOTES:

Redrock Huntington Beach 550
Huntington Beach, CA

REVISIONS:	DATE
--/--/--	--/--/--
--/--/--	--/--/--
--/--/--	--/--/--
--/--/--	--/--/--

JOB NUMBER:
_

INSTALL DATE:
--/--/--

DRAWING DESCRIPTION:
Truss Dimensions

FILE NAME:
Redrock Huntington Beach 550 01.19.23.vwx

CREATED:
1/17/22

LAST REVISION:
--/--/--

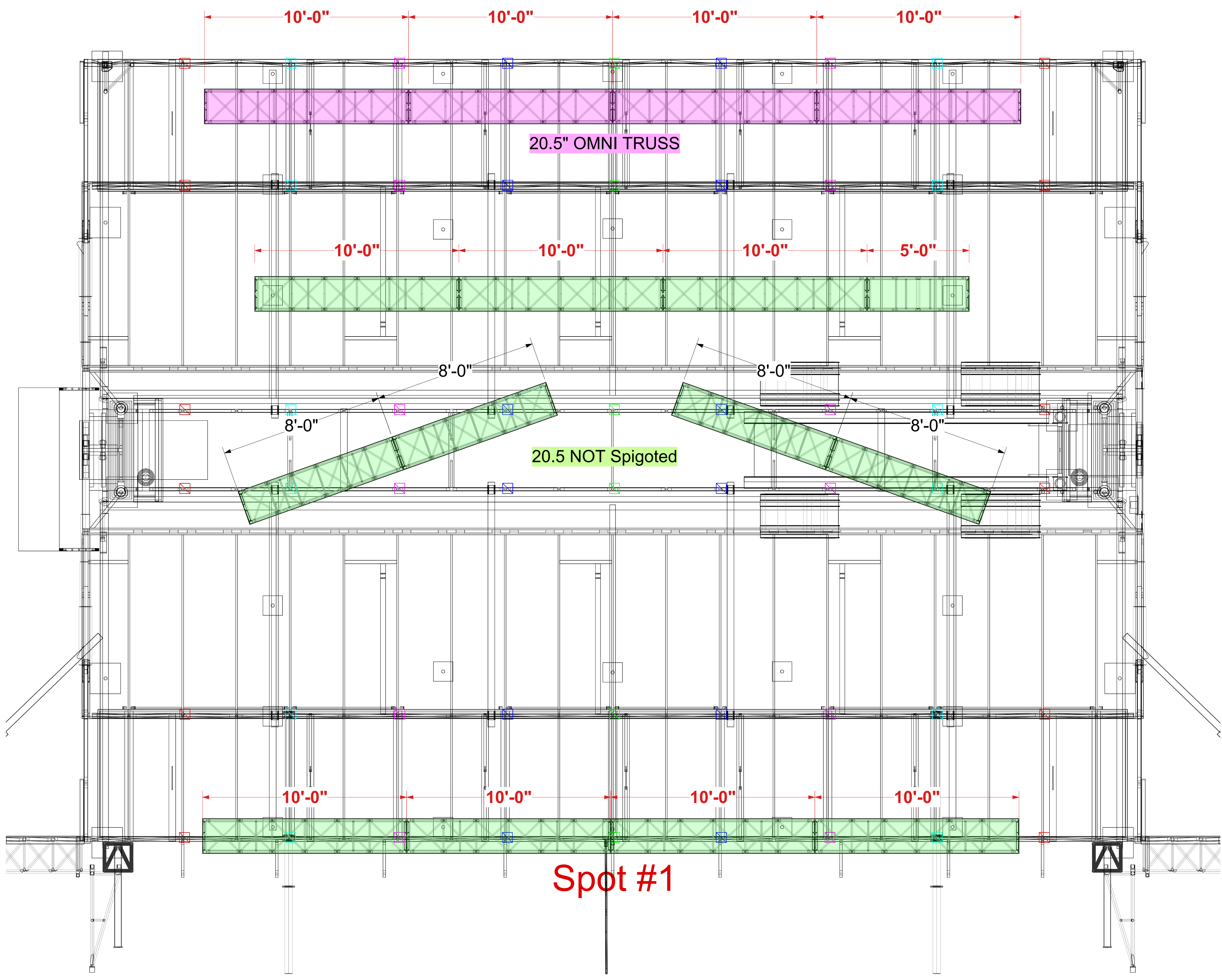
SCALE:
N.T.S.

STAMP:
"FITTED" .PDF'S & FAXES
ARE NOT TO THIS SCALE
(PLEASE USE GRAPHIC
SCALE)

SHEET: Sht-9
OF
12

SHEET SIZE:
US Arch D

CREATED BY:
Hannah Buckhoff



THIS DRAWING, ITS INHERENT CONCEPTS, AND ALL COPYRIGHT CONTAINED HEREIN ARE THE SOLE PROPERTY OF STAGE:TECH. THEREFORE, NEITHER IT, NOR ANY PORTION THEREOF, MAY BE DISCLOSED OR REPRODUCED IN ANY MANNER WITHOUT THE EXPRESSED CONSENT OF SAID OWNER. POSSESSION OF THIS DRAWING DOES NOT CONSTITUTE OWNERSHIP. UNAUTHORIZED REPRODUCTION OF THIS DRAWING IS A VIOLATION OF COPYRIGHT LAW.

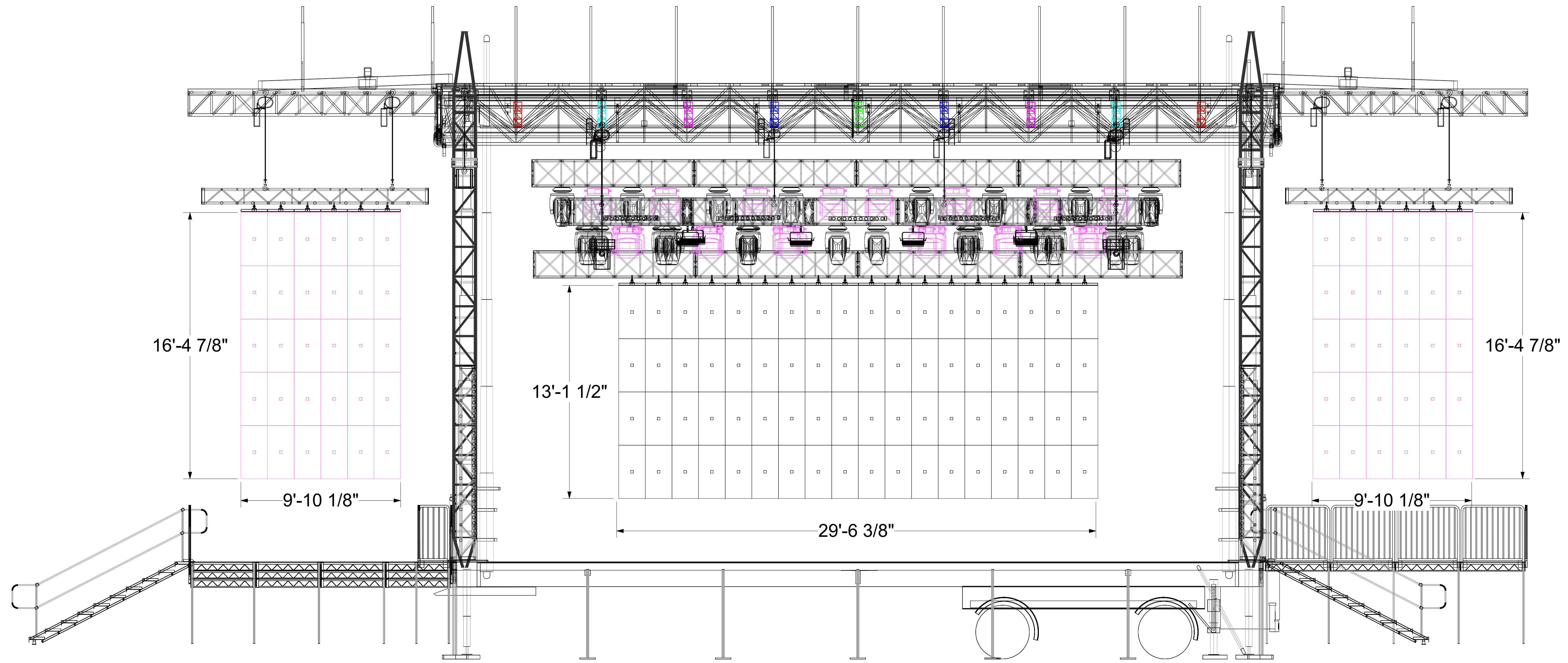
THESE CONCEPTS ARE INTENDED FOR THIS PRODUCTION ONLY AND MAY NOT BE SOLD, TRANSFERRED, GIVEN TO A THIRD PARTY, OR USED FOR ANY OTHER PRODUCTION.

THIS ILLUSTRATION REPRESENTS VISUAL CONCEPTS ONLY AND IS NOT MEANT TO IMPLY OR CERTIFY STRUCTURAL SUITABILITY, SOUNDNESS, FITNESS, OR SAFETY. ITS CREATOR TAKES NO RESPONSIBILITY FOR ITS PROPER EXECUTION.

ANY INCLUDED WEIGHTS AND/OR RIGGING ELEMENTS ARE OFFERED AS ESTIMATES ONLY, ARE EXPRESSLY NOT CERTIFIED BY STAGE:TECH, AND SHOULD BE REFERRED TO APPROPRIATE PROFESSIONALS FOR EVALUATION.

NOTES:

Redrock Huntington Beach 550
Huntington Beach, CA



REVISIONS:	
--/--/--	--/--/--
--/--/--	--/--/--
--/--/--	--/--/--

JOB NUMBER:
_

INSTALL DATE:
--/--/--

DRAWING DESCRIPTION:
Front View

FILE NAME:
Redrock Huntington Beach 550 01.19.23.vwx

CREATED:
1/17/22

LAST REVISION:
--/--/--

SCALE: N.T.S.	STAMP:
"FITTED" .PDF'S & FAXES ARE NOT TO THIS SCALE (PLEASE USE GRAPHIC SCALE)	
SHEET: Sht-10 OF 12	

SHEET SIZE:
US Arch D

CREATED BY:
Hannah Buckhoff

THIS DRAWING, ITS INHERENT CONCEPTS, AND ALL COPYRIGHT CONTAINED HEREIN ARE THE SOLE PROPERTY OF STAGE-TECH. THEREFORE, NEITHER IT, NOR ANY PORTION THEREOF, MAY BE DISCLOSED OR REPRODUCED IN ANY MANNER WITHOUT THE EXPRESSED CONSENT OF SAID OWNER. POSSESSION OF THIS DRAWING DOES NOT CONSTITUTE OWNERSHIP. UNAUTHORIZED REPRODUCTION OF THIS DRAWING IS A VIOLATION OF COPYRIGHT LAW.

THESE CONCEPTS ARE INTENDED FOR THIS PRODUCTION ONLY AND MAY NOT BE SOLD, TRANSFERRED, GIVEN TO A THIRD PARTY, OR USED FOR ANY OTHER PRODUCTION.

THIS ILLUSTRATION REPRESENTS VISUAL CONCEPTS ONLY AND IS NOT MEANT TO IMPLY OR CERTIFY STRUCTURAL SUITABILITY, SOUNDNESS, FITNESS, OR SAFETY. ITS CREATOR TAKES NO RESPONSIBILITY FOR ITS PROPER EXECUTION.

ANY INCLUDED WEIGHTS AND/OR RIGGING ELEMENTS ARE OFFERED AS ESTIMATES ONLY, ARE EXPRESSLY NOT CERTIFIED BY STAGE-TECH, AND SHOULD BE REFERRED TO APPROPRIATE PROFESSIONALS FOR EVALUATION.